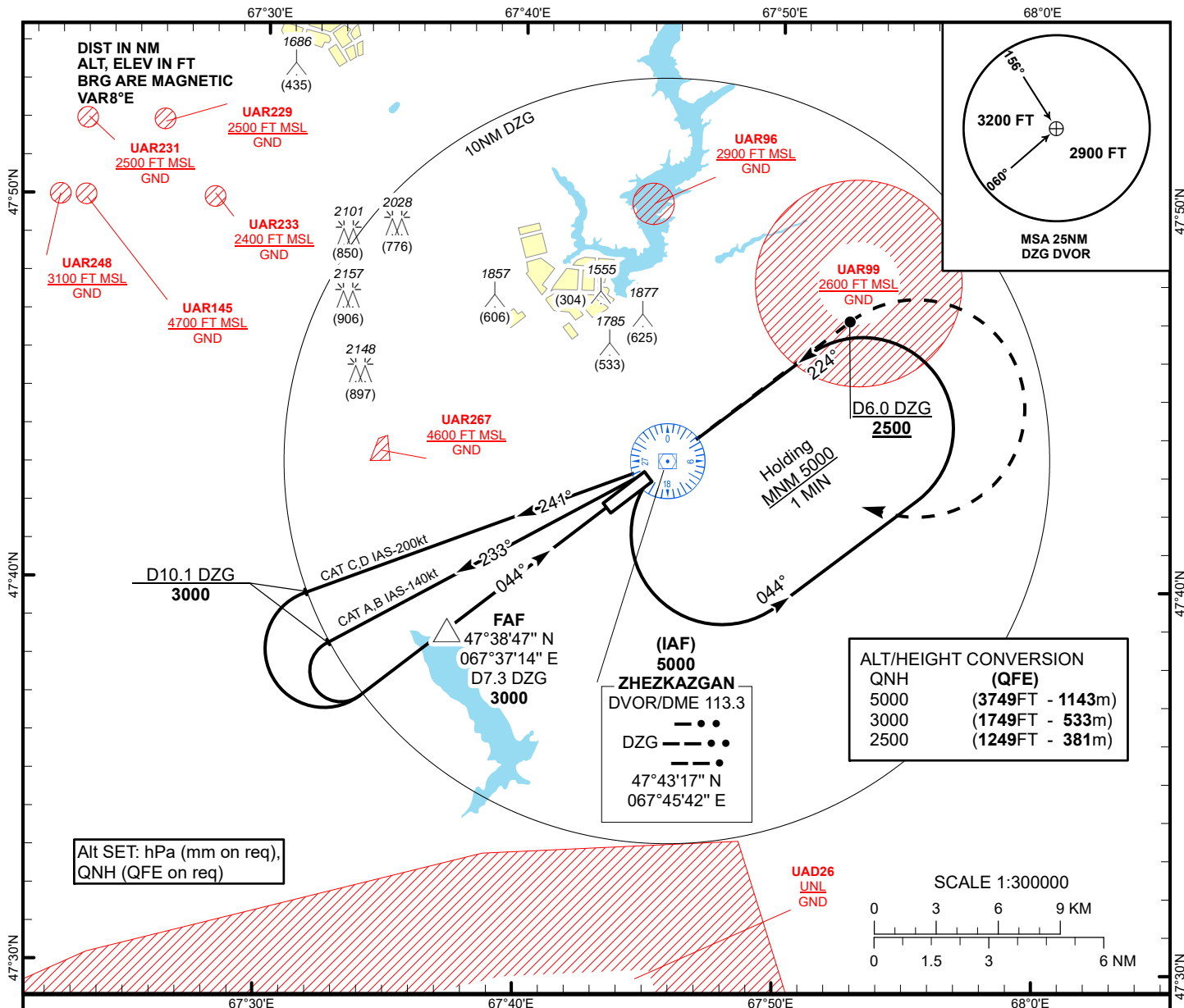


INSTRUMENT  
APPROACH  
CHART - ICAO

AERODROME ELEV 1251 FT  
HEIGHTS RELATED TO  
AD ELEV

ZHEZKAZGAN TOWER 127.1  
ZHEZKAZGAN ATIS (EN) 131.4  
ZHEZKAZGAN ATIS (RU) 122.4

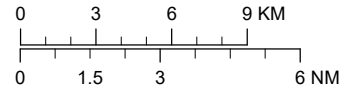
ZHEZKAZGAN  
VOR/DME Z  
RWY 04



Alt SET: hPa (mm on req),  
QNH (QFE on req)

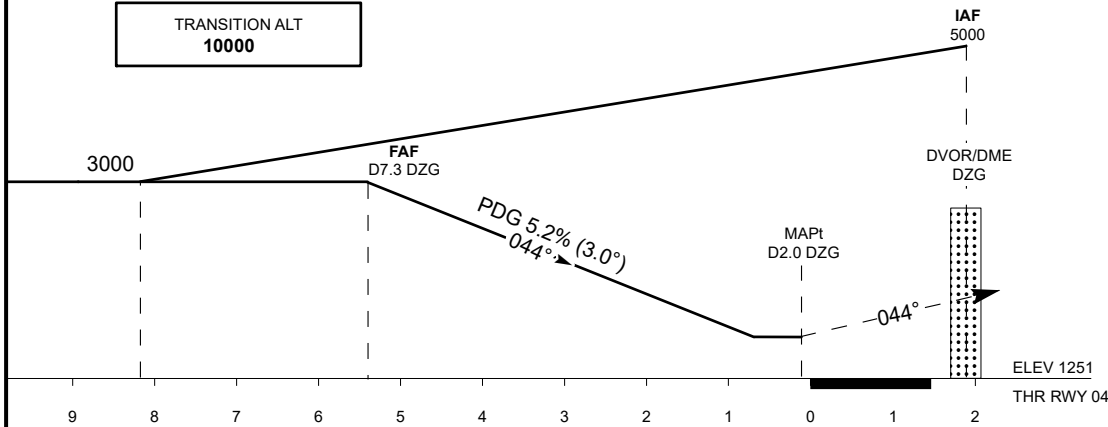
QNH	(QFE)
5000	(3749FT - 1143m)
3000	(1749FT - 533m)
2500	(1249FT - 381m)

SCALE 1:300000



TRANSITION ALT  
10000

**MISSED APPROACH**  
Climb on track 044° to 2500 or above  
outbound to D6.0 DZG, turn RIGHT  
to DZG. Climb initially to 3000,  
then as directed.  
**RADIO FAILURE:** in the  
case of RCF climb to 5000 to DZG  
and join to holding pattern. Missed  
approach turn speed limited  
to 250kt IAS maximum.



Aircraft Category	A	B	C	D	DIST THR	5.4	5	4	3	2	1
Straight-in Approach OCA/H					DME DZG	7.3	6.9	5.9	4.9	3.9	2.9
	VOR/DME	1530(280)	1530(280)	1530(280)	1530(280)	ALTITUDE	3000	2892	2574	2255	1937
						HEIGHT	1749	1641	1323	1004	686
											367

Aerodrome Operating Minima (MDH ft x RVR(CMV))	VOR/DME					GS	Kt	80	100	120	140	160	180
						FAF-MAPt 5.3NM	min:sec	3:59	3:11	2:39	2:16	1:59	1:46
						Rate of descent(5.2%)	ft/min	420	530	640	740	850	960

CHANGE: MSA, obstacles, add ATIS.

ZHEZKAZGAN  
VOR/DME Z

AERONAUTICAL DATA TABULATION

VOR approach to RWY04 from DVOR/DME DZG	
Fix/point	Coordinates
(IAF) DVOR/DME DZG	47° 43' 17.1"N 067° 45' 41.7"E
(FAF) D7.3 DZG	47° 38' 46.7"N 067° 37' 14.0"E
THR RWY 04	47° 42' 06.51"N 067° 43' 29.14"E
Final approach descent angle is 3°	